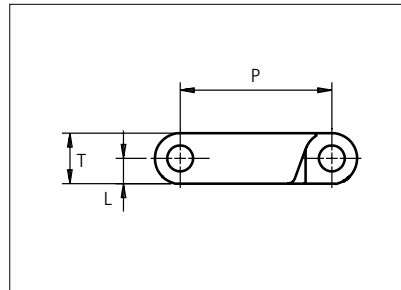
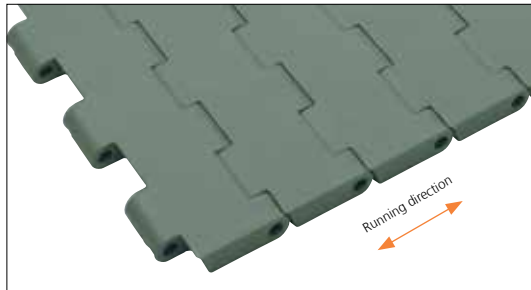


Plastic Modular Belt

Series **uni SSB** Type **C**



Straight running belt
 Nominal pitch: 38.1 mm (1.50 in)
 Surface type: Flat
 Surface opening: Closed
 Backflex radius: 45.0 mm (1.8 in)
 Pin diameter: \varnothing 6.35 mm (0.25 in)

Belt material & color	POM-LF BR	PP G
Pin and lock material & color	PBT-GR N	PP B

	mm	in		mm	in
P (Nominal)	38.1	1.50	T	12.7w	0.50
L	6.4	0.25	-	-	-

Non standard material and color: See uni Material and Color Overview.

Alternative pin and lock materials: Pin: PP **W** SS304

Belt width		Permissible tensile force (Belt/pin material)				Belt weight (Belt/pin material)				*Min. No. drive sprocket per shaft	Number of wear strips (Min. No.)	
		POM-LF/PBT-GR		PP/PBT-GR		POM-LF/PBT-GR		PP/PBT-GR			**Carry (pcs)	**Return (pcs)
mm	in	N	lbf	N	lbf	kg/m	lb/ft	kg/m	lb/ft			
83	3.3	2988	672	1079	243	0.9	0.63	0.6	0.41	2	2	2
115	4.5	4140	931	1495	336	1.3	0.87	0.9	0.57	2	2	2
153	6.0	5513	1239	1991	448	1.7	1.16	1.1	0.76	2	2	2
191	7.5	6876	1546	2483	558	2.2	1.45	1.4	0.95	2	2	2
229	9.0	8244	1853	2977	669	2.6	1.74	1.7	1.14	2	2	2
305	12.0	10980	2468	3965	891	3.4	2.32	2.3	1.52	3	3	2
381	15.0	13716	3083	4953	1113	4.3	2.89	2.8	1.89	3	3	2
457	18.0	16452	3698	5941	1336	5.2	3.47	3.4	2.27	4	4	2
533	21.0	19188	4313	6929	1558	6.0	4.05	3.9	2.65	4	4	2
609	24.0	21924	4929	7917	1780	6.9	4.62	4.5	3.03	5	5	3
685	27.0	24660	5544	8905	2002	7.7	5.20	5.1	3.41	5	5	3
761	30.0	27396	6159	9893	2224	8.6	5.78	5.6	3.78	6	6	3

Additional standard belt widths are available in steps of 76.1 mm (3.00 in). Additional non-standard belt widths are available in steps of 25.4 mm (1.00 in).

1979	77.9	71244	16016	25727	5783	22.4	15.03	14.6	9.84	14	14	7
------	------	-------	-------	-------	------	------	-------	------	------	----	----	---

Additional standard belt widths are available in steps of 76.1 mm (3.00 in). Additional non-standard belt widths are available in steps of 25.4 mm (1.00 in).

2968	116.9	106848	24019	38584	8674	33.5	22.54	22.0	14.76	20	20	10
------	-------	--------	-------	-------	------	------	-------	------	-------	----	----	----

For belt width above 2968 mm, please contact our customer service to review packaging and handling.

General belt tolerance is +0/-0.4% at 23°C/73°F and 50% RH. For exact belt width contact Customer Service. Non standard belt width on request.

*Max. Load per Drive Sprocket. Belt material: POM-LF 2000 N (450 lbf), PP 1200 N (270 lbf).

**Max. Spacing between wear strips, Carry: 152 mm (6 in); Return: 304 mm (12 in).

= Single Link

Any questions? Please contact us.

Morskate Aandrijvingen BV

Oosterveldsingel 47A
 7558 PJ Hengelo (Ov)
 The Netherlands

NL

T +31 (0)74 - 760 11 11
 info@morskateaandrijvingen.nl
 www.morskateaandrijvingen.nl

DE

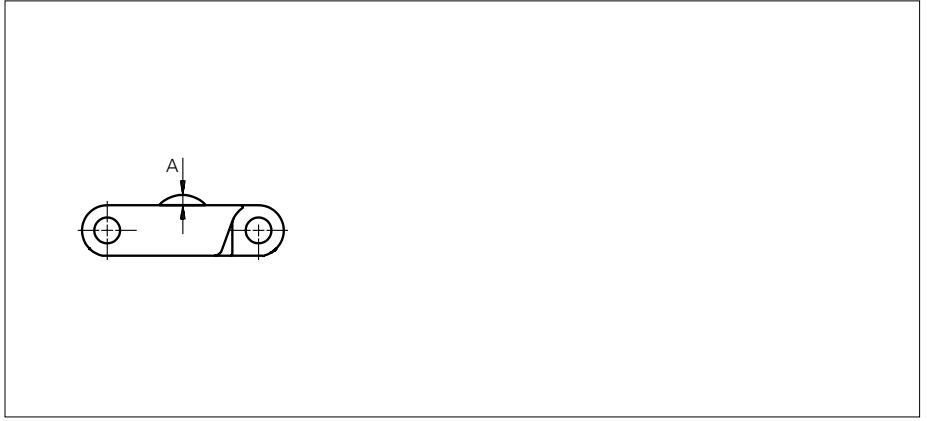
T +49 692 - 222 34 95
 info@morskateantriebstechnik.de
 www.morskateantriebstechnik.de

EN

T +31 (0)74 - 760 11 11
 info@morskatedrivetechnology.com
 www.morskatedrivetechnology.com

Accessories

Rubber Top

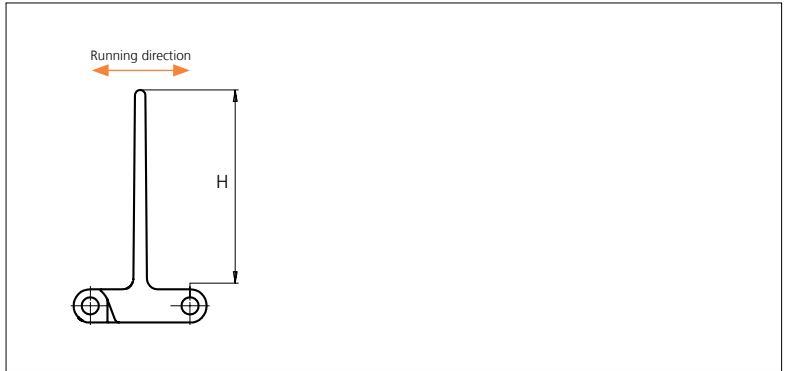
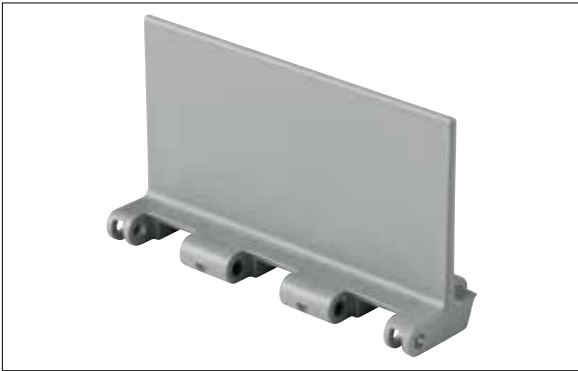


Type	Belt material & color	Rubber material & color	A		Link size	Width	
			mm	in		mm	in
Curved	POM-LF BR	05 I	2.5	0.10	K600	152.2	5.99

Non Standard material and color: See uni Material and Color Overview.

Accessories

Flight



Type	Flight Material & color	H		Link size	Width	
		mm	in		mm	in
Flat	PP-I G	76.1	3.00	K600	152.0	5.99

Non Standard material and color: See uni Material and Color Overview.

Minimum bricklaid indent is for uni SSB Product Support 50.8 mm (2.00 in).

Increment: 25.4 mm (1.00 in).

Any questions? Please contact us.

Morskate Aandrijvingen BV

Oosterveldsingel 47A
7558 PJ Hengelo (Ov)
The Netherlands

NL

T +31 (0)74 - 760 11 11
info@morskateaandrijvingen.nl
www.morskateaandrijvingen.nl

DE

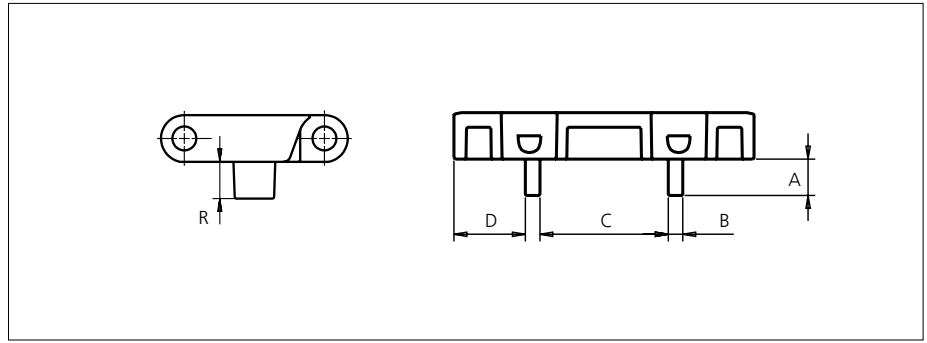
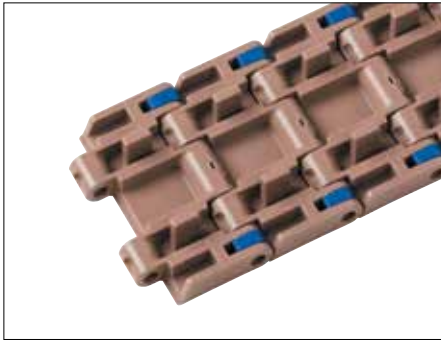
T +49 692 - 222 34 95
info@morskateantriebstechnik.de
www.morskateantriebstechnik.de

EN

T +31 (0)74 - 760 11 11
info@morskatedrivetechnology.com
www.morskatedrivetechnology.com

Accessories

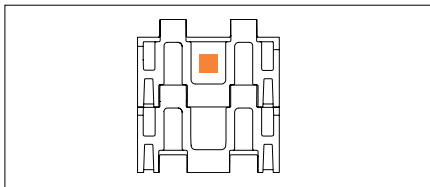
Tab / Single Link Only



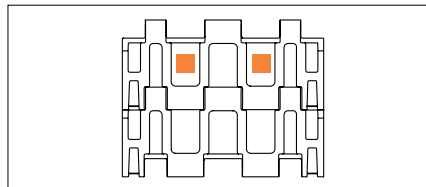
Type	Belt material & color	R		D		C		B		A		Link size	Width	
		mm	in	mm	in	mm	in	mm	in	mm	in		mm	in
Bottom Guide	POM-LF BR PP G	10.0	0.39	19.6	0.77	35.2	1.39	4.0	0.16	10.0	0.39	K325	82.6	3.25

Non Standard material and color: See uni Material and Color Overview.

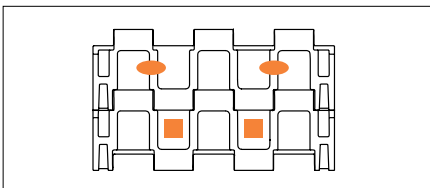
Overview Sprocket Placement



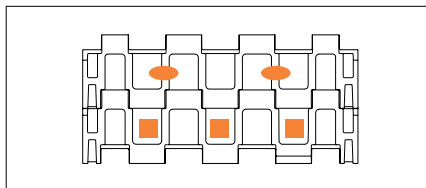
uni SSB K325



uni SSB K450



uni SSB K600



uni SSB K750

- = Single Row sprocket
- = Double Row sprocket

Any questions? Please contact us.

Sprocket

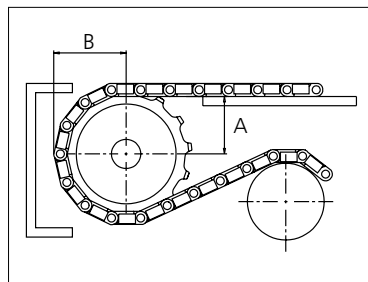
No of teeth	Bore size													Overall diameter		Pitch-diameter		Hub-diameter		A-dimension		B-dimension		Single row/Two way	Double row/Two way	Molded PA6 LG	Machined PA6 N
	Pilot Bore		0.75	0.78	0.98	1.00	1.18	1.25	1.50	1.57	2.36	2.50	3.54														
	mm	in	19.1	20.0	25.0	25.4	30.0	31.8	38.1	40.0	60.0	63.5	90.0	mm	in	mm	in	mm	in	mm	in	x	x	x	x		
Z19	x				●	●	●	■	●				117	4.61	117.3	4.62	75	2.95	49.1	1.93	65	2.56	x	x	x		
Z21	x				●	●	●	■	●				130	5.12	129.3	5.09	75	2.95	55.4	2.18	71	2.80	x	x	x		
Z23	x				●	●	●	■	●				142	5.59	141.2	5.56	75	2.95	61.6	2.43	77	3.03	x	x	x		
Z25	x					●	●	■	●				155	6.10	153.2	6.03	75	2.95	67.8	2.67	83	3.27	x	x	x		
Z27	x						●	■	●				167	6.57	165.2	6.5	75	2.95	74	2.91	89	3.50		x		x	
Z29	x						●	■	●				179	7.05	177.2	6.98	75	2.95	80.2	3.16	95	3.74		x		x	
Z31	x						●	■	●				192	7.56	198.3	7.81	75	2.95	86.4	3.40	101	3.98		x		x	

■ Molded sprocket

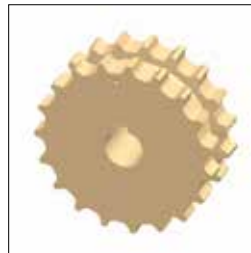
● Molded sprocket

● Molded sprocket

■ Machined sprocket



● Machined sprocket



Non standard material and color: See uni Material and Color Overview.

Other sprocket sizes are available upon request.

Two-part sprocket are available upon request.

Round bores are always delivered with keyway.

Other bore sizes are available upon request.

uni Retainer Rings: See uni Retainer Ring data sheet.

Width of tooth: 15.0 mm/0.59 in

Width of sprocket: Single row = 42.3 mm (1.67 in)

Double row = 42.3 mm (1.67 in)

Max load per sprocket shown does not take bore size into account.

Please also ensure that sufficient size shaft is chosen for corresponding load.

For correct sprocket position: See uni Assembly Instructions for uni SSB.

For more detailed sprocket information, contact Customer Service.

Any questions? Please contact us.

Morskate Aandrijvingen BV

Oosterveldsingel 47A
7558 PJ Hengelo (Ov)
The Netherlands

NL

T +31 (0)74 - 760 11 11
info@morskateaanrijvingen.nl
www.morskateaanrijvingen.nl

DE

T +49 692 - 222 34 95
info@morskateantriebstechnik.de
www.morskateantriebstechnik.de

EN

T +31 (0)74 - 760 11 11
info@morskatedrivetechnology.com
www.morskatedrivetechnology.com